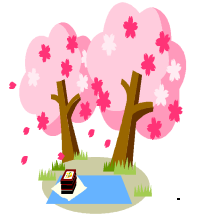




SHIBUKAWA CURRENT

Shibukawa International Association
222nd Edition, April 2011



Dear Readers!

It is difficult to comprehend the hardship suffered by those most affected by the tragedy in northeast Japan. But is my strong belief that now, more than ever before, we all need to unite as one and make every effort to overcome this catastrophe. Even here in Gunma, the tremor we felt was more severe than we had previously experienced. While events in Miyagi and the surrounding area put things into perspective, the subsequent food shortage, rolling blackouts and potential traces of radiation mean all of us in the Kanto region have been affected to some degree.

We should take encouragement from the words of Gunma Prefectural Government, requesting that everyone continue with their daily lives as much as possible. Please act accordingly, in a calm manner. Gunma Prefecture is a considerable distance from the Fukushima Power Plant, and any radiation detected in our region is at too low a level to warrant any immediate health concerns. Remain vigilant and please pay attention to local media who will keep you informed of planned blackouts and relevant news.

Best Viewing Spots

(さくらめいしよ
桜の名所)

- ☆ **Modori-to-Mizu-Kouen**
- ☆ **Bando Bridge**
- ☆ **Arima mini park**
- ☆ **Sougo Kouen park**
- ☆ **Ajisai park**
- ☆ **Shirojuku**
- ☆ **Shibukawa Park**

Although Hanami Festivals will be cancelled in many places in Shibukawa City out of respect for victims of the recent earthquake, we hope you can still enjoy the two weeks of cherry blossom in full bloom.



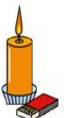
How to Prepare for a Blackout (ていでんむ じゅんび 停電に向けての準備)

- ◆ Unplug your electrical appliances prior to the blackout.
- ◆ Turn off and unplug your computers and hard drives to prevent data loss.
- ◆ Save some water if you are in a building that uses electricity to pump water.
- ◆ Hot water may be lost during blackouts if your system runs on electricity and not gas.
- ◆ Fully charge your mobile phones.
- ◆ Keep candles or other light sources handy, and light them before the blackout.
- ◆ Consider purchasing a flashlight and a battery-powered radio.
- ◆ While the blackouts continue, please be sure to check with relevant venues

Please take an Extra Caution

Most traffic lights will not work. Elevators, automatic door keys will not work. Make sure your electrical appliances (iron, hair dryers, computers) are turned OFF.

* Information provided by TEPCO.





Save Electricity

せつでん きょうりよく
(節電に協力)

As many of you are informed, that the Tokyo Electric Power Co. is facing a serious shortage on electricity. Please, try to contribute by trying to save electricity. Visit the Gunma Prefecture homepage in English http://www.pref.gunma.jp/foreign/foreign_English.html to see updated information on the earthquake.

Evacuation Site

ひなんじょ
(避難所)

As you know a strong earthquake can happen at any time or any season and give no advance warning. Please check in advance the location of evacuation site in your area.



If an Earthquake Occurs

じしん おきたとき
(地震が起きた時に)

- ★ Remain calm. Move to a safe place. Immediately extinguish all fires, turn off the gas supply valve.
- ★ Secure an escape exit by opening a window or a door.
- ★ In the case of heavy tremors, get in the archway of a door or under a large sturdy object.
- ★ Do not use elevators.
- ★ If you are outside stay away from buildings which may collapse.

Emergency Phone

きんきゅうでんわ
(緊急電話)

| | |
|--------------------|--------|
| Police (toll free) | 110 |
| Fire | // 119 |
| Rescue | // // |



Community Circle in Japan

ちいきじゅうみん
(地域住民のネットワーク)

Usually, a jichikai (community circle) exists as a unit in a local area called "hon-mchi or hon-cho" for example, which consists of a city, town and village. Jichikai activities include park cleaning days, locating garbage dumps, planning events such as the Bon festival, demonstrating what to do in case of fire or earthquakes, organizing donations, and so on.

Community information is usually passed on to families via a thick notice board, after reading it, passed it to the house next door. In the end, the board returns to the block leader. In this way everybody can receive the information. This community system supports the creation of safe towns by regional people through their information network. Many foreigners are not familiar with this kind of system. But if you participate in various kind of activities in their community circle you will be able to form good relationship with your neighbors, and you can enjoy a pleasant stay in Japan.

Community Activities

こうみんかん かつどう
(公民館活動)



The Shibukawa's local community centers are providing many community activities for you. There are many activities going on every week. You can learn helpful things for your daily life. It is also a perfect opportunity to make new friends and learn something about the community. Please call 22-4321 for more information.



Japanese Numeration (にほん すうじ かぞ かの 数字の 数え方)

Counting things in Japanese is more complicated than in English. The Japanese don't like the number 4 because of the pronunciation. Four is pronounced "shi," which is the same pronunciation as death. Therefore, you should not say "shi-nin" (four people) or make presents that consist of four pieces. There are many hospitals, hotels and apartment buildings that don't use the number four. If you make a mistake, most Japanese people will understand what you are implying, but if you know the specific word it would be easier for you to communicate and save time in Japan. Here are some useful Japanese counters.

| Numbers <small>(数字)</small> Su-ji | Numeration <small>(数え方)</small> Kazoe-kata | | | | | |
|--------------------------------------|--|-----------|----|---------------|-----------|----|
| | <u>Flat Things:</u> paper, cloth, pizza, window glass | | | <u>People</u> | | |
| 0 rei 零 | 1 | ichi-mai | 一枚 | 1 | hitori | 一人 |
| 0 zero ゼロ | 2 | ni-mai | 二枚 | 2 | futari | 二人 |
| 1 ichi 一 | 3 | san-mai | 三枚 | 3 | san-nin | 三人 |
| 2 ni 二 | 4 | yon-mai | 四枚 | 4 | yo-nin | 四人 |
| 3 san 三 | 5 | go-mai | 五枚 | 5 | go-nin | 五人 |
| 4 yon, shi 四 | 6 | roku-mai | 六枚 | 6 | roku-nin | 六人 |
| 5 go 五 | 7 | nana-mai | 七枚 | 7 | nana-ninn | 七人 |
| 6 roku 六 | 8 | hachi-mai | 八枚 | 8 | hachi-nin | 八人 |
| 7 nana, shichi 七 | 9 | kyu-mai | 九枚 | 9 | kyu-nin | 九人 |
| 8 hachi 八 | 10 | ju-mai | 十枚 | 10 | ju-nin | 住人 |
| 9 kyu 九 | | | | | | |
| 10 ju 十 | | | | | | |

2011 Japanese Classes Coming Soon

にほんごきょうしつ
(日本語教室)

| | | |
|--|--|---|
| Chuo Kominkan Basic Japanese conversation, Hiragana, Katakana and Elementary Kanji | Morning Session Tuesdays: 10-11:30am May 10, 2010 to March 13, 2011. (38 lessons) | Evening Session Tuesdays: 7-8:30pm May 10, 2010 to March 13, 2011. (38 lessons) |
| Fee: | 3000yen (excluding material) | 3000yen (excluding material) |
| Hokkitsu Hoken Center Basic Japanese conversation, Hiragana, Katakana and Elementary Kanji | 1st Tuesday of every month at 10-11am When the 1st Tuesday falls on holiday it will be held on the next Tuesday. It is also a good chance to you to discuss any of your problems (after class) related to your daily life. | |
| Fee: | 1000yen (excluding material) | |





Free Entry Pass to Skyland Park

しみんとくべつわりようけん
(市民特別無料券プレゼント)

Free entry coupons are distributed with the monthly Shibukawa Koho, March 15 issue. The holder can use the entry pass until June 30th. The Skyland Park has a large parking lot and when you pass through the main gate you can find yourselves in a land of dreams that thrills both children and adults. You can also enjoy the 360-degree panorama of Shibukawa.



Exercise classes

けんこう きょうしつ
(健康づくり教室)

The classes will be held on April 23rd, June 20th, and July 11th from 6 - 7:30pm (every Monday, 3 times) at Komochi Shakai Taikukan. Sign-ups will be held until May 20th

It's free! So feel free to join us. Please call 22-7780 for more information

Play with Kids (親子のリトミック教室)

Enjoy time with your children and music. (Children from 1-3 years old) It will be held on July 12th, November 29th, January 17th, and February 14th (4 times, every Tuesday) from 10pm - 10:45 at Shibukawa Kominkan. **It's free!!** Please call 22-4321 for more information.

Limit: 30 pairs of parent and child. **Sign-up:** until June 24th

Play with Kids (親子リズム教室)

Take advantage of the happy parental time for play with music. It will be held on April 18th-May 16th from 3pm - 3:50pm (Every Monday, 5 times) at Shibukawa Chuo Kominkan.

Limit: 50 pairs of parent and child (children 3 to 6 years old) **It's free!!**

Sign-up: April 11th - 13th

Tel: 22-4321 (for sign-up)



Ikaho Green Bokujo

いかほ グリーン ぼくじょう
(伊香保グリーン牧場)

Take advantage of the beautiful crisp spring weather by visiting Ikaho Green Bokujo Ranch. There you can enjoy playing with animals, various outdoor sports, milking cows, and sheepdog races.



Health Consultation 24 Hour Hot-Line (24時間健康相談)

Shibukawa city now provides free health consultation for residents in the Shibukawa City. Take advantage of this opportunity to ask about any of you or your family's physical/mental problems.

You can also obtain medical information. **Toll-free number 0120-377-240** (Japanese)



Information (お問い合わせ)

Shibukawa City Office Planning Division 80 Ishihara, Shibukawa City

TEL: 0279-22-2396 FAX: 0279-24-6541

Email: sia-kikaku@city.shibukawa.gunma.jp

Staff: Mr. Kuwajima, Mr. Sakuma, Mr. Machida, Mr. Oyama, Mrs. Sarwar

